

Wharton Leadership Ventures Program

Information Session

September 7, 2017



OUR MISSION



To create, offer, and facilitate world-class expeditions, intensives, and workshops that provide MBA students with high demand environments for growth and development



LEADERSHIP VENTURES ARE...

- Immersive experiences that require leadership and followership
- Experiences that facilitate self-discovery
- Opportunities to step outside *your* comfort zone and exceed *your* personal limitations
- Available in three different areas: Workshops, Intensives, and Expeditions

2017-2018 WHARTON LEADERSHIP VENTURES



Leadership Workshops: Conducted during a fall and spring weekend and are targeted towards the development of specific leadership skills and competencies. Workshops are local and at no cost.

Intensives: Range from one-two days and tend to be low-medium in physical intensity. Intensives are within driving distance of Wharton and have varying levels of cost.

Expeditions: Range from 6-14 day overnight trips and tend to be high in physical intensity. Expeditions span the globe and have varying levels of cost.

HOW WILL YOU BENEFIT FROM A VENTURE?



- Test and apply the concepts in a low consequence environment
- See tangible consequences of decisions and action/ inaction
- Develop your self-awareness and emotional intelligence
- Receive feedback and reflect on personal and team experiences
- Witness group evolution and team development

LEADERSHIP WORKSHOPS



Example focus:

- Centering, listening, and managing emotions
- Using creativity to succeed
- Negotiation tactics and building rapport
- Stage presence, collaboration, and expressiveness
- Decision-making, teamwork, and leadership strategy

LEADERSHIP WORKSHOPS



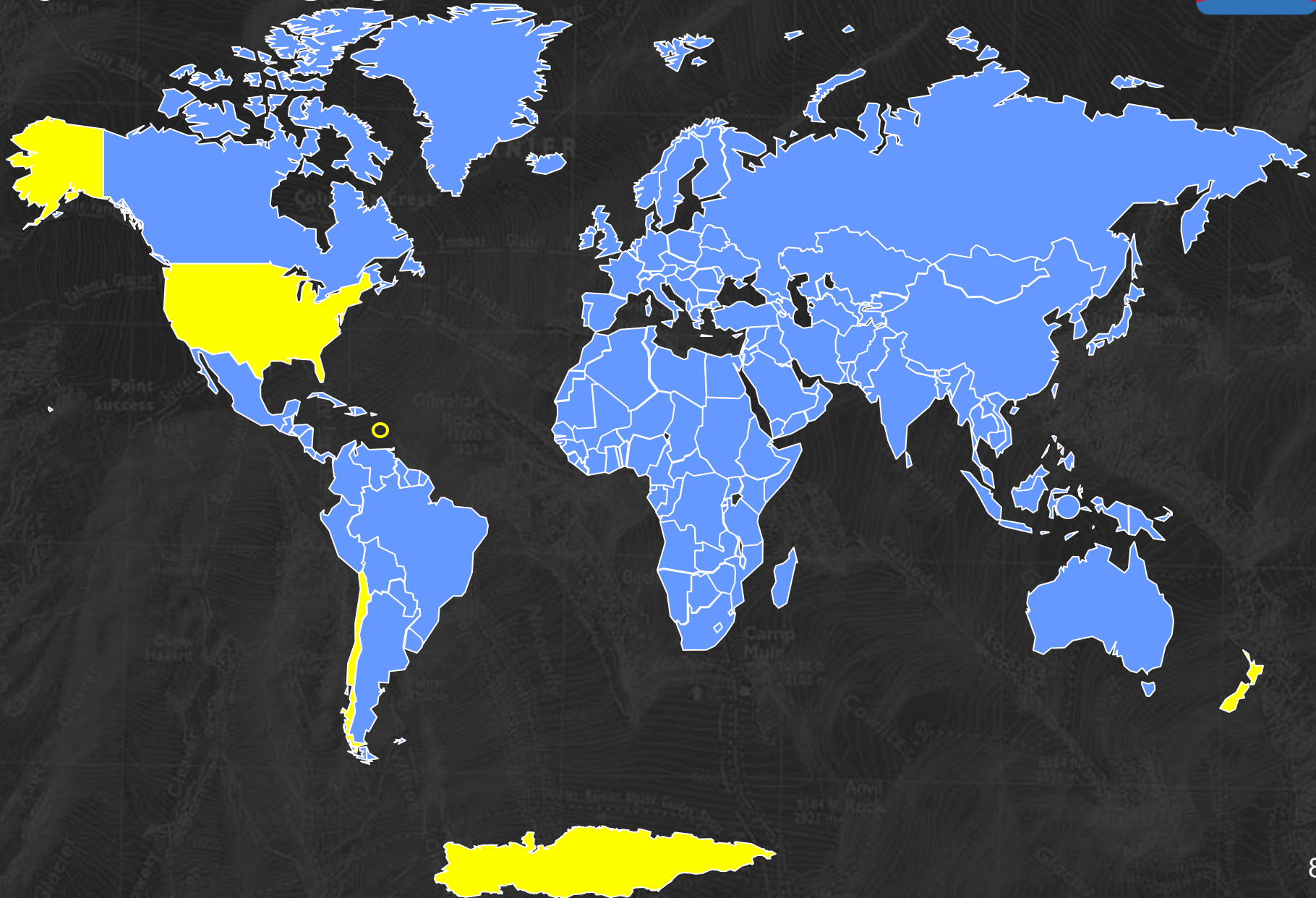
Workshop	Details	Seats	Cost
<p>Leadership Lessons from the U.S. Civil War Gettysburg Battle</p>	<p>Friday, September 29 6:30am-6:30pm Prof. Mike Useem, Director-Wharton Center for Leadership and Change Management Location: Off campus (specific location confirmed after registration complete and transportation provided)</p>	45	FREE
<p>Leader as Storyteller</p>	<p>Friday, October 20 TBD Quinn Bauriedel, Co-Founder Pig Iron Theatre Location: On campus (specific location confirmed after registration complete)</p>	20	FREE
<p>Conflict and You: The Power of Aikido</p>	<p>Friday, October 20 2:00m-6:15pm Judy Ringer, Author of <i>Unlikely Teachers</i> & Andrew Cohn, Executive Coach Location: Off campus (specific location confirmed after registration complete)</p>	20	FREE
<p>game On Nation</p>	<p>Friday, October 20 TBD TBD</p>	35	FREE

LEADERSHIP WORKSHOPS



Workshop	Details	Seats	Cost
Leadership Presence	Friday, October 21 8am-6pm Quinn Bauriedel, Co-Founder Pig Iron Theatre Location: Off campus (specific location confirmed after registration complete and transportation provided)	29	FREE
Big Muse: Finding a More Authentic Self	Friday, November 10 9:00am – 2:00pm Location: On Campus (specific location confirmed after registration complete)	45	FREE
Gathering Intelligence through Conversation	Saturday, November 11 9:00am – 2:00pm FBI Special Agent "Vinny" Ginda Arvinde, Hostage Negotiation Team Location: On Campus (specific location confirmed after registration complete)	35	FREE

LEADERSHIP VENTURE EXPEDITIONS SPAN THE GLOBE



EXPEDITION PARTNERS



National Outdoor Leadership School

The leader in wilderness education

- Utah Canyoneering



Project U.S.E. (Urban Suburban Environments)

Over 20 years experience in sailing

- Caribbean Sailing



Sea Education Association

Premier sailing educational organization

- Tall Ships Sailing



Tai Poutini Polytechnic

Leading polytechnic school in New Zealand that offers mainstream and specialist programs including Outdoor Education

- New Zealand Coast to Coast



Vertical

Experts in rock, ice and mountain climbing

- Antarctica Trekking
- Atacama Desert Trekking
- Patagonia Trekking



United States Marine Corps

No explanation needed

- Quantico Military Simulation



NYC Fire Department

Protect lives and property of NYC residents/visitors

- FDNY Simulation



EXPEDITION RISKS & ACTIVITIES

Wharton Leadership Ventures is committed to promoting a positive learning environment and the physical and emotional well-being of our students. We believe that our students are intelligent adults who can make appropriate decisions for themselves. Our commitment to you is to provide you with timely, accurate information about the activities included in each of our Ventures and to meet the highest industry standards for outfitter selection and risk management. You are ultimately responsible for your decisions.

Wharton Leadership Venture Expeditions involve considerable risk. Outdoor activities present hazards. Many of our courses are isolated expeditions with significant variables that can initiate complex emergency situations without clear or simple solutions. Medical assistance and/or evacuation may be days away. We do not – and cannot – guarantee your safety.



DEFINING CHARACTERISTICS OF AN EXPEDITION

- **Goal-oriented focus:** set goals and strategies as a team and individually
- **Critical decision making:** the outcome is dependent on the decisions of the leader of the day and the team
- **Authentic uncertainty:** path/process to goal or outcome is not guaranteed; risk of failure is inherent
- **Immersion event:** limited opportunities to quit or exit
- **Opportunities of stress:** from ambiguity, risk of failure, conflict, and unfamiliar roles and environments

2017-2018 VENTURE FELLOWS



VENTURE FELLOWS



- 28 second-year students with primary responsibility of designing and delivering educational content of Venture
- Training includes facilitation, conflict mediation, coaching, group decision making, crisis management, situational leadership, wilderness navigation, and wilderness first aid
- Pre-Venture Responsibilities: 1-on-1 with each participant to assess personal leadership development goals, logistics (gear, travel, etc.); pre-trip conditioning, and group development
- Venture Responsibilities: facilitate leadership development and deliver educational content
- Post-Venture Responsibilities: follow-up and review with group



November 30 – December 1, 2017

Spring Dates: TBD

QUANTICO, USMC

QUANTICO, USMC



Venture Fellows



Michael Gebhardt



Steve Low

Basic Information

Brief Description:

The Quantico venture builds upon U.S. Marine Corps programs and facilities for developing leadership at its Officer Candidate School in Quantico, Virginia; duration ~ 30 hours

Landed Cost: \$550

Group Size: 90

Activities:

- Adaptability Training
- Leadership Reaction Course
- Tarzan Confidence Course
- Combat Obstacle Course

Difficulty / Rigor:

- Moderate difficulty and rigor, but little pre-Venture physical training required.

Risks:

- Bumps and bruises. Insect bites. Common Cold symptoms from swamp exposure.



FDNY

Fall Date: November 4, 2017

Spring Date: TBD



FIRE DEPARTMENT OF NEW YORK CITY



Venture Fellows



Michael Gebhardt



Steve Low

Basic Information

Brief Description:

Venture uses real FDNY training facilities on Randall's Island, NY. Venture focuses on crisis leadership and communication through fire and emergency response simulation.

Landed Cost: \$550

Group Size: 40

Activities:

- Extinguishing burning car
- Responding to the scene of a bombing
- Searching for casualties in a smoke-filled room

Difficulty / Rigor:

- Moderate difficulty and rigor. No pre-venture training required.

Risks:

- Normal physical risks, including bumps, bruises, sprains, falls.





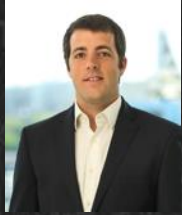
ANTARCTICA TREKKING

December 27, 2017 – January 4, 2018

ANTARCTICA TREKKING



Venture Fellows



Sisco Fernandez



Lauren Marion



Shilpa Sethuraman

Basic Information

Brief Description: Participants will carry packs, pull sleds and wear snow shoes/crampons to explore glacial ice cap and the coast

Landed Cost: \$6,800

Group Size: 36 students

Activities:	Difficulty / Rigor:	Risks:
<ul style="list-style-type: none"> ▪ Backpacking ▪ Mountaineering / Glacier travel ▪ Multi-Day exposure ▪ Winter tent camping ▪ Navigation and route finding 	<ul style="list-style-type: none"> ▪ Pre-Trip Conditioning: Moderate ▪ During Venture: Moderate - Difficult (weather dependent) 	<ul style="list-style-type: none"> ▪ Extreme cold, snow, and ice ▪ Hypothermia / Frostbite ▪ Multi-Day exposure ▪ Isolated travel





**TALL SHIPS SAILING
NAVIGATION & OCEANOGRAPHIC EXPLORATION**

December 29, 2017 – January 6, 2018

TALL SHIP SAILING



Venture Fellows



Lindsay Lechner



Patrick Quay



Jonathan Wood

Basic Information

Brief Description:

Three teams of seven participants navigating and managing a 161 foot-long ship for 8 days in the Southern Pacific Ocean near New Zealand

Landed Cost: \$3,700

Group Size: 20 students

Activities:

- Sailing
- Oceanographic Research
- Navigation and Handling of the Sails
- Ship Management, including ship watch

Difficulty / Rigor:

- Medium

Risks:

- Sea Sickness
- Sunburn/Heatstroke
- Deep Waters
- Dehydration



Andes Mountaineering

Winter: December 29, 2017 – January 5, 2018

Spring: March 3 – 10, 2018



ANDES MOUNTAINEERING*



Venture Fellows



Rodrigo Hernandez



Amaka Uzoh



Oran Barkai



Snow Li



Basic Information

Brief Description:

Alpine style climb of a major peak in the Central Chilean Andes. This venture will provide both physical and mental challenge exercising leadership, teamwork and self-discipline.

Landed Cost: \$3,200

Group Size: 24 Students



Activities:

- Mountaineering
- Glacier travel
- Day hiking

Difficulty / Rigor:

- Pre-Trip Conditioning: High (good physical condition a must)
- During Venture: High (long periods of strenuous activity)

Risks:

- Altitude sickness
- Frostbite and hypothermia
- Crevasses
- Avalanches



*The final details of this venture have yet to be finalized

SMALL CREW SAILING TACTICS, NAVIGATION & RACING

March 3 – 10, 2018



SMALL CREW SAILING



Venture Fellows



Michie Adachi



Luke Betterman



Kristin Nottebohm



Vinayak Uppal

Basic Information

Brief Description:

8-day intense experience in Grenada on a 44-foot modern sailboat learning about navigation, steering, tactics, and racing in a dynamic, small team environment

Landed Cost: \$3,650

Group Size: 20

Activities:

- Tactical sailing and racing
- Navigation courses
- Close-quarter community living
- Active teamwork and communication

Difficulty / Rigor:

- Pre-trip conditioning: Low to moderate
- Expect moderate physical challenges
- Prepare to function as a team and develop as a leader

Risks:

- Sea sickness
- Heat stroke
- Exhaustion
- Sunburn
- Discomfort





PATAGONIA TREKKING

March 3 – 10, 2018

PATAGONIA TREKKING



Venture Fellows



Kirtika
Challa



Thu
Nguyen



Matt
Premus

Basic Information

Brief Description: Week of trekking in Chile's Patagonia region on one of the world's most stunning mountain trails –Dientes Circuit

Landed Cost: \$3,500

Group Size: 36

Activities:	Difficulty / Rigor:	Risks:
<ul style="list-style-type: none"> ▪ Backpacking / Trekking ▪ Rock climbing ▪ Tent camping ▪ Rappelling 	<ul style="list-style-type: none"> ▪ Conditioning: High ▪ During Venture: High (10+ hours of hiking with full backpacks per day) 	<ul style="list-style-type: none"> ▪ Multi-day exposure ▪ Unexpected weather ▪ Exhaustion ▪ Isolated travel ▪ Hypothermia



UTAH CANYONEERING

March 3 – 10, 2018



UTAH CANYONEERING



Venture Fellows



Susan Adler



Brent Muller



Basic Information

Brief Description:

This venture is 7 days of challenging adventures. Backpack through the canyons of the Colorado Plateau in southern Utah developing backcountry skills.

Landed Cost: \$3,600

Group Size: 12

Activities:

- Climbing
- Rapelling and rope usage
- Backpacking
- Compass and Map Navigation
- Camping

Difficulty / Rigor:

- HIGH
- Full day 8 – 12 hour backpacking in extreme conditions

Risks:

- Isolated Travel (outside help could be days away)
- Multi-Day Exposure: Desert, Heat, Cold
- Hypothermia and Frostbite



SOUTHERN LAKES TRAVERSE

December 29, 2017 – January 6, 2018



SOUTHERN LAKES TRAVERSE



Venture Fellows



Greg Certo



Anita Chen

Basic Information

Brief Description:

Embark on a 6-day multi-disciplinary expedition traversing the Southern Lakes region of New Zealand backpacking, biking, and kayaking through a range of environments.

Landed Cost: \$5,200

Group Size: 12

Activities:

- Biking
- Kayaking
- Backpacking
- Compass and Map Navigation
- Camping

Difficulty / Rigor:

- Pre-trip conditioning: High (good physical condition a must)
- During Venture: High

Risks:

- Multi-day exposure
- Unexpected weather
- Exhaustion
- Isolated travel



A scenic view of a river flowing through a valley. The river is clear and blue, with white rapids and rocks visible. The surrounding landscape is lush green with trees and grass. In the background, there are snow-capped mountains under a clear blue sky.

NEW ZEALAND COAST TO COAST VENTURE
MAORI: MOANA KI TE MOANA (ocean to ocean)

December 29, 2017 – January 7, 2018

NEW ZEALAND COAST TO COAST



Venture Fellows



Tom Magnuson



Cassandra Wolcott



Basic Information

Brief Description:

The expedition will start at the edge of the Tasman Sea and over the next 8 days traverse across New Zealand's South Island until the Pacific Ocean

Land Cost:

\$5,200

Group Size:

12



Activities:	Difficulty / Rigor:	Risks:
<ul style="list-style-type: none"> ▪ Backpacking ▪ Mountain biking ▪ White river rafting ▪ Compass and Map Navigation ▪ Camping 	<ul style="list-style-type: none"> ▪ Pre-trip conditioning: High (good physical condition a must) ▪ During Venture: High 	<ul style="list-style-type: none"> ▪ Multi-day exposure ▪ Unexpected weather ▪ Exhaustion ▪ Isolated travel



ATACAMA DESERT HIGH ALTITUDE MULTISPORT

March 3 – 10, 2018



ATACAMA DESERT



Venture Fellows



Danielle Gorman



Mark Simmons



Liz Parsons

Basic Information

Brief Description:

The only multi-sport venture in the driest location on earth

Landed Cost: \$ 3,500

Group Size: 36

Activities:	Difficulty / Rigor:	Risks:
<ul style="list-style-type: none"> • Mountaineering & hiking • Summiting a 18,000 ft volcano • Mountain biking • Rock climbing & rappelling • Navigation • Canyoning 	<ul style="list-style-type: none"> • Pre-Trip Conditioning: High • During Venture: High • This venture requires participants to be fit and motivated in order to accomplish strenuous but fun activities in extreme weather conditions 	<ul style="list-style-type: none"> • High altitude • Falling rocks • Extreme cold (frostbite and hypothermia) • Sunburn/heatstroke • Multi-day exposure



SUMMARY OF WLTV EXPEDITIONS



Venture	Terrain	Physical Intensity	Camping/ Outdoor Living	High Altitude	Weather Exposure	Heavy Load Carrying	Endurance	Short Expedition
Antarctica	Glacier	◆	✓		✓	✓	✓	
Atacama	Desert	◆	✓	✓	✓		✓	
Andes Mountaineering	Mountain	◆		✓	✓		✓	
FDNY	Urban	◆						✓
New Zealand (C2C, S. Lakes)	Ocean/ Mountain	◆	✓		✓	✓	✓	
Patagonia	Mountain	◆	✓		✓	✓	✓	
Quantico	Forest	◆			✓		✓	✓
Small Crew Sailing	Ocean	■	✓		✓			
Tall Ships Sailing	Ocean	■	✓		✓			
Utah	Desert	◆	✓		✓	✓	✓	

◆ Very Difficult – High Level of Training Required

■ Difficult – Moderate Level of Training Required 36



IMPORTANT INFORMATION

- Ventures do not conflict with the academic calendar and are not an acceptable excuse for missing classes or coursework
- Expedition dates as shown do not include travel days to/from Venture
- Prices do not include personal equipment, clothing, airfare, land travel, meals when not on expedition, or spending money
- We reserve the right to cancel any Venture at any time for any reason
- We reserve the right to remove participants from any Expedition at any time for any reason



REGISTRATION & IMPORTANT DATES

VF Office Hours:

- *Week of September 11 @ 11:30 – 2:00pm*

Course Match Registration Opens:

- *Tuesday, September 19*

Course Match Closes:

- *Thursday, September 21 at 5:00 pm EST*

Course Match Results Posted:

- *Friday, September 22, Waitlist opens and Drop/Add begins immediately after*

Payment Deadline for Expeditions:

- *Friday, September 29*

*After **September 29, 2017**, if you are taken off of a wait list, you will have 24 hours to accept or decline the seat, and 48 hours to pay the fees or your spot will be given to the next participant on the wait list.*



COURSE MATCH REGISTRATION

In order to ensure that the greatest number of students are able to participate in a Leadership Venture during their time at Wharton, budget allocations are assigned as follows:

- Second year students that have not participated in any ventures (Expeditions, Intensives, or Workshops) are given highest priority
- All first year students are given 2nd highest priority.
- Second year students that have previously participated in an Expedition or Intensive or were No Shows at a workshop receive last priority

WAITLIST MANAGEMENT



- Students who are not placed in the Venture of their choice after Course Match runs will be able to put themselves on waitlists.

Please note that historically 30-50% of Expedition and Intensive participants have come from the waitlist and up to 75% of workshop participants were originally waitlisted.



EXPEDITIONS: PAYMENT & REGISTRATION

- Payment may be made by Visa, MasterCard, or American Express. Refunds are given through the travel insurance only
- Failure to meet the payment deadlines can result in Venture removal
- Insurance: We require that you obtain trip cancellation insurance and arrange a group rate as well as a subsidy
- Behavior Contract: This is a Leadership Program, any behavior that endangers you or another will not be tolerated
- Risk and Release: You need to take responsibility for your choices

SCHOLARSHIPS



- Scholarship application opens Thursday, September 7th and closes Tuesday, September 12th at 5:00 pm ET
 - *Important:* Occurs before the broader CourseMatch venture assignment period
- There will be a separate CourseMatch for verified scholarship applicants
- By submitting a scholarship application, applicants are asserting he or she cannot afford to pay for a venture otherwise and will be prevented from applying to participate in a venture in the broader CourseMatch venture assignment period



EXPEDITIONS: TRAVEL INSURANCE

In order to participate on a WLV Expedition, you must certify that you:

- Have purchased the iTravelInsured-Travel LX trip cancellation insurance
- Are accepting a \$125.00 subsidy
- Are releasing Wharton from all obligations to refund any portion of your trip Understand that participation in a WLV Expedition is non-transferable.
- Know that failure to meet the payment deadline will result in your removal from the WLV Expedition
- In order to participate on a WLV Expedition, you are **REQUIRED** to purchase the subsidized trip cancellation insurance through the iTravelInsured - Travel LX program that we have provided.

EXPEDITIONS: TRIP CANCELLATION



Trip Cancellation Insurance

- The agreement for trip insurance is between the participant and the iTravelInsured -Travel LX program. The Wharton School and the Wharton Leadership Venture Program will not refund any fees for any reason.
- The Trip Cancellation insurance must be purchased within 20 days of registration in order to be valid.
- The Trip Cancellation insurance will refund **75%** of your costs if you cancel FOR ANY REASON and **100%** refunds for reasons specified in the policy (Read the policy).
- In order to purchase Trip Cancellation Insurance, estimate the full cost of the trip (venture cost) + plane ticket



EXPEDITIONS: TRAINING SESSIONS

- Anyone can succeed on a venture, BUT they are **hard**. To help you prepare, VFs run physical training sessions
 - **What:** Physical trainings are 1 hour strength/cardio trainings for anyone who wants to get in shape
 - **Who:** Everyone is welcome. The trainings are designed specifically for the ventures and are highly recommended for those waitlisted and those attending ventures
 - **When:** Trainings usually held twice a week. E-mails will be sent to everyone registered or waitlisted for a venture
 - **Where:** Outdoors, near campus and Center City



WHERE TO FIND OUR WEBSITE

- Go to:
<https://leadership.wharton.upenn.edu/mba-leadership-ventures/>
- Click on: Leadership Ventures – MBA
- Here you can find information on Expeditions, Intensives, and Workshops

The screenshot shows the Wharton Leadership website. The top navigation bar includes links for Quick Links, News, Directories, Campuses, Wharton Home, and Penn. The main header features the Wharton University of Pennsylvania logo and the word 'LEADERSHIP'. A search bar is located on the right. Below the header is a navigation menu with options: Home, About Us, Events, The Leadership Center, Undergraduates, MBA Students (highlighted), Alumni & Executives, and Contact Us. The main content area is titled 'MBA STUDENTS' and features a sidebar on the left with links to Learning Team Experience, Management 610, MBA Leadership Ventures (highlighted), Expeditions and Intensives, Workshops, Venture Registration, Venture Fellows, Leadership Workshops in San Francisco, and Leadership Fellows. The main content area is titled 'MBA LEADERSHIP VENTURES' and contains the following text: 'Leadership Ventures are experiences that facilitate self-discovery, leadership, and character development. Participants are able to step out of their comfort zone, exceed personal limitations, and experience leadership firsthand. There are three types of Leadership Ventures: **Expeditions, Intensives and Workshops.**' Below this is a highlighted box with the text: 'The Leadership Ventures Information Session (Expeditions, Intensives, Workshops) will be on Thursday, September 4th from 12:00 PM - 1:20 PM in JMHH G06. Registration for Ventures will be available in CourseMatch from 9 am EST September 8th until 5 pm EST September 10th.' To the right, a section titled 'IMPORTANT DATES FALL 2014' lists: 'September 8, 2014 at 9:00 am EST: CourseMatch Registration Opens', 'September 10, 2014 at 5:00 pm EST: CourseMatch Closes', 'September 10, 2014 - October 10, 2014 at 5:00 pm EST: Drop/Add for Expeditions, Intensives, and Workshops (excluding Fall Quantico) on Coursematch', and 'September 15, 2014: CourseMatch results emailed.'

Questions? Ask your Venture Fellows!



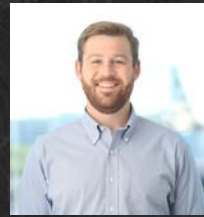
Michie Adachi
Small Crew Sailing



Susan Adler
Utah Canyoneering



Luke Betterman
Small Crew Sailing



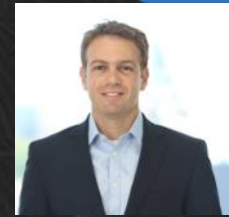
Greg Certo
Southern Lakes Traverse



Anita Chen
Southern Lakes Traverse



Sisco Fernandez
Antarctica



Oran Barkai
Andes Spring



Michael Gebhardt
Intensives



Danielle Gorman
Atacama



Rodrigo Hernandez
Andes Winter



Kirtika Challa
Patagonia



Lindsay Lechner
Tall Ship Sailing



Snow Li
Andes Spring



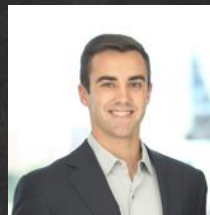
Steve Low
Intensives



Tom Magnuson
Coast to Coast



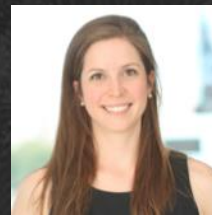
Lauren Marion
Antarctica



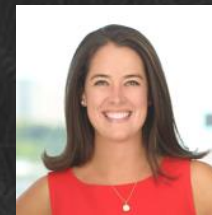
Brent Muller
Utah Canyoneering



Thu Nguyen
Patagonia



Kristin Nottebohm
Small Crew Sailing



Liz Parsons
Atacama



Matt Premus
Patagonia



Patrick Quay
Tall Ship Sailing



Shilpa Sethuraman
Antarctica



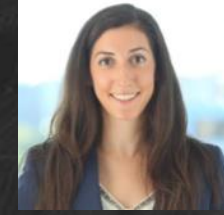
Mark Simmons
Atacama



Vinayak Uppal
Small Crew Sailing



Amaka Uzoh
Andes Winter



Cassandra Wolcott
Coast to Coast



Jonathan Wood
Tall Ship Sailing 47

