

Wharton Leadership Ventures Program

Information Session

September 9, 2024





TODAY'S AGENDA

- Share the **mission** and **characteristics** of a Wharton Leadership Venture
- Meet the WG25 **Venture Fellows** and **our partners**
- Preview the 2024-25 **Venture offerings**
- Review **key dates and logistics** (e.g., how to apply)
- Breakout for **Q&A**

All information in this session is subject to change

What are Wharton Leadership Ventures?



OUR MISSION



To create, offer, and facilitate world-class
expeditions and intensives

that provide MBA students with highly demanding
environments for **mutual growth, experiential
learning, and leadership development**

LEADERSHIP VENTURES INVOLVE



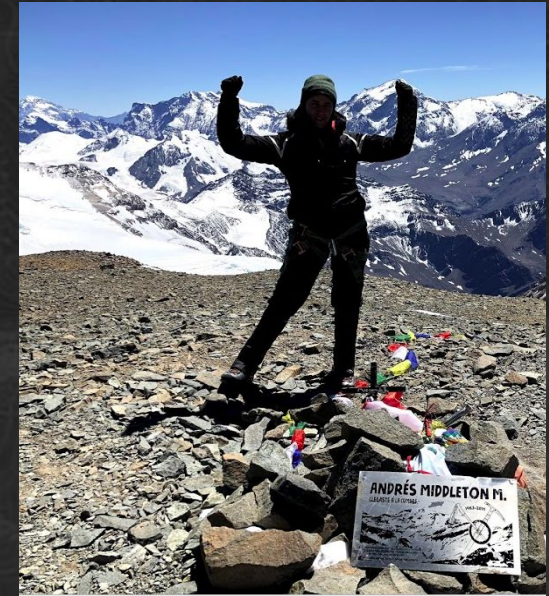
LEADERSHIP AND MEMBERSHIP

Observe leadership or the absence of leadership first-hand



SELF AND PEER DISCOVERY

Step out of comfort zone



CHARACTER DEVELOPMENT

Exceed personal limitations



DEFINING CHARACTERISTICS OF AN EXPEDITION

Experiential Learning:

learn through leading, following, and doing

Feedback:

reflect on your personal and team experience

Decision Making:

make decisions, strategize, and set goals as a leader and member

Uncertainty:

risk failure, conflict, and ambiguity

Immersive:

Participatory involvement for the entire venture (Crew, not passengers)

NOT a casual leisure trip!

LEADERSHIP VENTURES FORMAT

Intensives



- 1-2 days
- Within driving distance

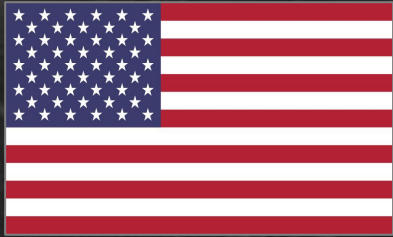
Expeditions



- 7-9 days
- Across the globe

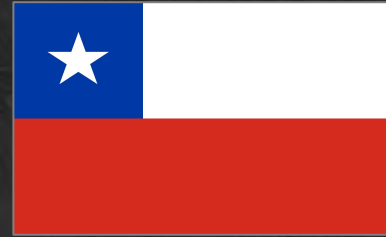
EXPEDITIONS SPAN THE GLOBE

USA



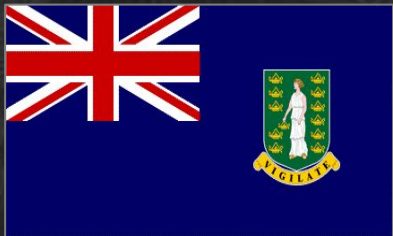
- Intensives (FDNY, Quantico)
- Alaska

Chile



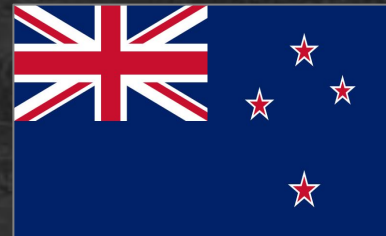
- Atacama Desert
- Andes Mountaineering
- Avellano Valley - Patagonia
- Vodudahue - Patagonia

British Virgin Islands



- Small Crew Sailing

New Zealand



- Mountain to Sea
- Tall Ship Sailing

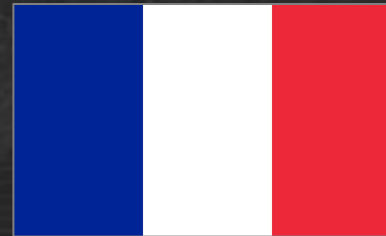
Antarctica



- Antarctica trekking

*Runs once every 2 years
NOT OFFERED 2025-26*

France



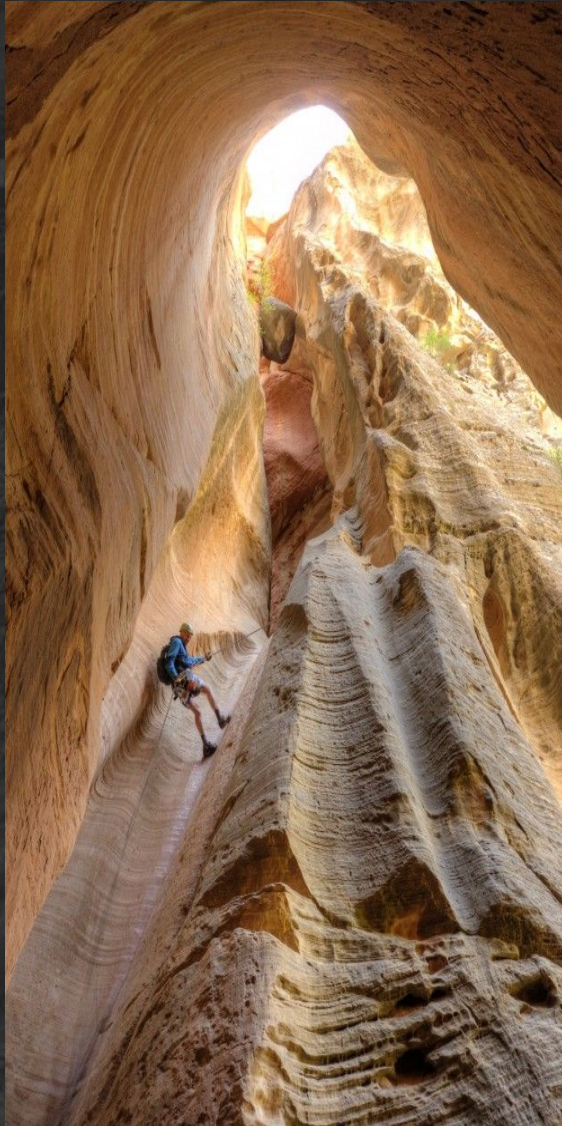
- Chamonix
- Corsica

★ *New for 2024-25*

Risks and Preparedness



EXPEDITION RISKS & ACTIVITIES



Wharton Leadership Venture Expeditions involve **considerable risk**. Outdoor activities present **hazards**. Many ventures are isolated expeditions with significant variables that can initiate **complex emergency situations without clear or simple solutions**. Medical assistance and/or evacuation may be days away. **We do not – and cannot – guarantee your safety.**

However, we **are committed to your physical and emotional well-being**. We commit to providing you with timely, accurate information about the activities included in each of our ventures and to meet the highest industry standards for outfitter selection and risk management. You are ultimately responsible for your decisions. We believe that our students are intelligent adults who can make appropriate decisions for themselves.

PHYSICAL FITNESS



You **DO NOT** need to be in top physical shape to **participate**.

It's more about **attitude**, **mentality**, and **preparation** for the specific venture!

...but, **training** will make the experience **a lot more fun!**

PHYSICAL PREPARATION

Anyone can succeed on a venture, BUT they are **hard**. Being physically prepared ahead of your venture will make the adventure more enjoyable and allow you to focus more fully on leadership development.

Venture-specific



Your VFs and WLV staff can suggest workouts to ensure you are prepped for the physical demands of your specific venture (e.g. biking, carrying a heavy pack, breaking in hiking boots)

Consistency



We suggest that you develop a routine prior to your venture. Allow for regular workouts and adequate recovery time.

Individual



It is your individual responsibility to prepare physically for the venture you are attending. Consider this your first contribution to the team you will be part of for a week in the wild.

Venture Fellows & Partners



2024-2025 VENTURE FELLOWS & PARTNERS



August VF Training, '24

WHO ARE THE VENTURE FELLOWS?

- **Classmates:**

- 36 second-year students who love the outdoors, adventures, and using teamwork to make the dream work

- **Trained Venture Educators:**

- Lead the educational content of the Venture; trained in conflict mediation, goal setting, coaching, and group decision making

BEFORE

- Meet with each participant
- Support logistics (gear, travel,...)

DURING

- Facilitate and deliver educational content

AFTER

- Reflect with the group

EXPERIENCED EXPEDITION PARTNERS



Nivation

- New Zealand Mt. to Sea



Sea Education Association

- Small Crew Sailing
- Tall Ships Sailing



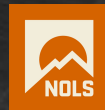
Vertical

- Andes Mountaineering
- Atacama Desert
- Antarctica
- Cerro Castillo - Patagonia
- Vodudahue - Patagonia



Mountain Path

- Corsica, France
- Chamonix, France



NOLS

- Alaska



United States Marine Corps

- Quantico Military Simulation



NYC Fire Department

- FDNY Simulation

The 2024/25 Leadership Ventures



SUMMARY OF WLTV EXPEDITIONS



	Venture	Date	Terrain	Physical Intensity	Camping/ Outdoor Living	High Altitude	Weather Exposure	Heavy Load Carrying	Endurance
FALL	Atacama Desert	Fall 24	Desert	■	✓	✓	✓		✓
	Chamonix (France)	Fall 24	Mountain	◆	✓	✓	✓		✓
	Corsica (France)	Fall 24	Mountain	◆	✓		✓		✓
WINTER	Andes Mountaineering	Winter 24	Mountain	◆	✓	✓	✓		✓
	Antarctica Trekking	Winter 24	Ice	■	✓		✓	✓	✓
	NZ Mt. to Sea (Aotearoa)	Winter 24	Mountain	◆	✓		✓	✓	✓
	Tall Ships Sailing	Winter 24	Ocean	■	✓		✓		
SPRING	Avellano Valley - Patagonia	Spring 25	Mountain	◆	✓		✓	✓	✓
	Vodudahue - Patagonia	Spring 25	Mountain	◆	✓		✓	✓	✓
	Small Crew Sailing	Spring 25	Ocean	■	✓		✓		
1 DAY	FDNY	Fall & Spring	Urban	■					
	Quantico	Spring	Forest	■			✓		✓

◆ Very Difficult – High Level of Training Required

■ Difficult – Moderate Level of Training Required

A high-altitude mountain landscape with snow patches and a lake reflecting the scene. The mountains are dark with white snow patches, and the sky is a clear, deep blue. The foreground shows a calm lake reflecting the mountains and sky.

ATACAMA DESERT HIGH ALTITUDE MULTISPORT

October 12 – 19, 2024

ATACAMA DESERT

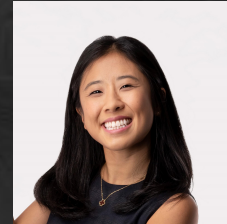
Venture Fellow & Basic Information

Landed Cost:* \$3,900

Group Size: 18

October 12-19, 2023

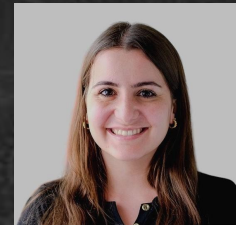
Spend a week in one of the most unique and beautiful landscapes on earth, and challenge yourself and support your teammates through multiple activities, all done at altitude



Wendy Huang
hwendy@



Dan Riband
ribandd@



Sydney Babiak
sbabiak@



Details

Activities:	Difficulty / Rigor:	Risks:
<ul style="list-style-type: none"> Trekking Mountain Biking Rock Climbing Mountaineering Navigation 	<ul style="list-style-type: none"> Pre-trip conditioning: High (good physical condition recommended) During Venture: High Participants must pass bike test before landing 	<ul style="list-style-type: none"> High altitude Falling rocks Extreme cold (frostbite and hypothermia) Sunburn/heatstroke Multi-day exposure

*Prices do not include any personal equipment, spending money, clothing, airfare, or non-expedition land travel or meals

Chamonix - France

FALL: October 12 - 19, 2024



CHAMONIX - France



Venture Fellow & Basic Information

Landed Cost:*

\$4,300

Group Size:

24

Oct 12 - 19, 2024

A week of trekking beginning in the village of Chamonix and then navigating through high alpine meadows filled with lakes, and high mountain plants.



Hasit Dewan
hdewan@



Nancy Jiang
nzjiang@



Samhita Karnati
skarnati@



Will Van Fossen
willvf@



Details

Activities:	Difficulty / Rigor:	Risks:
<ul style="list-style-type: none"> ▪ Backpacking ▪ Trekking ▪ Tent camping 	<ul style="list-style-type: none"> ▪ Highest physical conditioning recommended ▪ During Venture: High (10+ hours of hiking with full backpacks on some days) 	<ul style="list-style-type: none"> ▪ Unexpected weather ▪ Exhaustion ▪ Altitude Sickness ▪ Multi-day exposure

*Prices do not include any personal equipment, spending money, clothing, airfare, or non-expedition land travel or meals

Corsica - France

FALL: October 12 - 19, 2024



CORSICA - France



Venture Fellow & Basic Information

Landed Cost:* \$4,600

Group Size: 12

Oct 12 - 19, 2024
A week of trekking the spine of mountains that divide the west and east coast of the island of Corsica.



Chris Corbett
ccorbe@



Namoonga Kwendakwema
nkwen@



Details

Activities:	Difficulty / Rigor:	Risks:
<ul style="list-style-type: none"> ▪ Backpacking ▪ Trekking ▪ Tent camping ▪ Water works challenge 	<ul style="list-style-type: none"> ▪ Highest physical conditioning recommended ▪ During Venture: High (10+ hours of hiking with full backpacks on some days) 	<ul style="list-style-type: none"> ▪ Multi-day exposure ▪ Unexpected weather ▪ Exhaustion

*Prices do not include any personal equipment, spending money, clothing, airfare, or non-expedition land travel or meals

FDNY Intensive

Fall: Nov 16th, 2024

Spring: TBD

FDNY



FIRE DEPARTMENT OF NEW YORK CITY



Venture Fellow & Basic Information

Landed Cost:* \$700

Group Size: 40

Nov 16, 2023
Spring TBD

Venture uses real FDNY training facilities on Randall's Island, NY. Venture focuses on crisis leadership and communication through fire and emergency response simulation.



Aaron Ledsky
aledsky@



Details

Activities:	Difficulty / Rigor:	Risks:
<ul style="list-style-type: none"> Extinguishing burning car Responding to the scene of a bombing Searching for casualties in a smoke-filled room 	<ul style="list-style-type: none"> Moderate difficulty and rigor. No pre-venture training required. 	<ul style="list-style-type: none"> Normal physical risks, including bumps, bruises, sprains, falls.

*Prices do not include any personal equipment, spending money, clothing, airfare, or non-expedition land travel or meals

Andes Mountaineering

WINTER: Dec 28, 2024 – Jan 4, 2025



ANDES MOUNTAINEERING



Venture Fellow & Basic Information

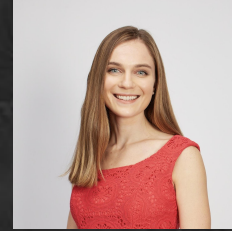
Landed Cost:* \$3,900

Group Size: 24

Dec. 28, 2024 - Jan. 4, 2025
Alpine climb of a major peak in the Central Chilean Andes. This venture will provide both physical and mental challenge exercising leadership, teamwork, and self-discipline.



Zac Lim
zaclim@



Liz Ostertag
eost@



Kelsey Murray
kmurr21@



Michael Karamardian
mak11@



Details

Activities:	Difficulty / Rigor:	Risks:
<ul style="list-style-type: none"> High-altitude Mountaineering Glacier/Snow Travel Backpacking 	<ul style="list-style-type: none"> Pre-Trip Conditioning: High physical condition is necessary During Venture: High (long periods of strenuous activity) 	<ul style="list-style-type: none"> Altitude sickness, cold, sunburn, multi-day exposure, isolated travel, falling rock/rolling rock, and hypothermia

*Prices do not include any personal equipment, spending money, clothing, airfare, or non-expedition land travel or meals



Antarctica

December 27, 2024 - January 4, 2025

ANTARCTICA



Venture Fellow & Basic Information

Landed Cost:* \$7,900

Group Size: 48

Dec 27, 2024 - Jan 4, 2025
 A week-long exploration of Antarctica's King George island, stressing decision-making, teamwork, and leadership in a challenging environment.



Misha Putnam
mishap@



Gabi Siegal
gsiegal@



Cameron Butler
butler25@



Joe Welch
joewelch@



Katie McCarren
kmccarr@



Details

Activities:	Difficulty / Rigor:	Risks:
<ul style="list-style-type: none"> ▪ Backpacking ▪ Mountaineering ▪ Winter tent camping ▪ Glacier travel ▪ Navigation 	<ul style="list-style-type: none"> ▪ High physical conditioning recommended ▪ During Venture: Moderate (hiking with full backpacks and sleds) 	<ul style="list-style-type: none"> ▪ Multi-day exposure ▪ Unexpected weather ▪ Exhaustion ▪ Isolated travel ▪ Hypothermia

*Prices do not include any personal equipment, spending money, clothing, airfare, or non-expedition land travel or meals

New Zealand

Aotearoa Southern Traverse | NZ's Southern Alps

WINTER: December 29, 2024 – January 6, 2025



NEW ZEALAND



Venture Fellow & Basic Information

Landed Cost:* \$4,600

Group Size: 18

Dec. 29, 2024 - Jan. 6, 2025
Teams trekking the Southern Alps and rafting river gorges in the South Island of New Zealand.



Javo Bierwirth
djavaneh@



Nick Marfongelli
nickmarf@



Will Sedgwick
sedgw@



Details

Activities:	Difficulty / Rigor:	Risks:
<ul style="list-style-type: none"> Trekking Ka Tiritiri o te Moana, the Southern Alps Rafting (moderate grade rapids, self guided) 	<ul style="list-style-type: none"> High (good physical condition recommended) 	<ul style="list-style-type: none"> Cold / Hypothermia Sunburn / Heatstroke Fast / Deep Water Snow / Ice

*Prices do not include any personal equipment, spending money, clothing, airfare, or non-expedition land travel or meals

TALL SHIPS SAILING

NAVIGATION & OCEANOGRAPHIC
EXPLORATION

WINTER: December 28, 2024 –
January 4, 2025



TALL SHIP SAILING



Venture Fellow & Basic Information

Landed Cost:* \$4,100

Group Size: 18

Dec. 28, 2024 - Jan. 4, 2025
 Teams of participants navigating and managing a 134 foot-long Brigantine ship for 8 days in open sea, in the waters surrounding the north island of New Zealand



Corey Wallace
cwall1@



Manali Mahajan
mandlim@



Frank Gao
zhg@



Details

Activities:	Difficulty / Rigor:	Risks:
<ul style="list-style-type: none"> Continuous navigation Critical oceanographic research Sailing Ship management, including ship watch 	<ul style="list-style-type: none"> Pre-trip conditioning: Low to moderate Expect moderate physical challenges Irregular sleep Decision-making under unfamiliar circumstances 	<ul style="list-style-type: none"> Sea Sickness Sunburn/Heatstroke Deep Waters Dehydration

*Prices do not include any personal equipment, spending money, clothing, airfare, or non-expedition land travel or meals

Avellano Valley - Patagonia

SPRING: March 8 – 15, 2025

AVELLANO VALLEY - PATAGONIA



Venture Fellow & Basic Information

Landed Cost:* \$3,900

Group Size: 18

March 8 - 15, 2025
Week of trekking in Chile's Patagonia region on one of the world's most stunning mountain regions – the Avellano Valley



Andres Strulovic
andressg@



Chip Chambers
chipcham@



Jake Pence
pence@



Details

Activities:	Difficulty / Rigor:	Risks:
<ul style="list-style-type: none"> ▪ Backpacking ▪ Trekking ▪ Tent camping 	<ul style="list-style-type: none"> ▪ Conditioning: Moderate ▪ During Venture: High/Moderate (Long trekking days with packs) 	<ul style="list-style-type: none"> ▪ Multi-day exposure ▪ Unexpected weather ▪ Exhaustion ▪ Isolated travel ▪ Hypothermia

*Prices do not include any personal equipment, spending money, clothing, airfare, or non-expedition land travel or meals



Vodudahue - Patagonia (“Cloud Forest”)

SPRING: March 8 – 15, 2025

VODUDAHUE - PATAGONIA (“CLOUD FOREST”)



Venture Fellows & Basic Information

Landed Cost:*

\$4,000

Group Size:

24

March 8 - 15, 2025

Week of trekking in Chile's northern Patagonia region (Pumalin National Park) with rainforest, fjords, mountains, & SA's longest Via Ferrata

How to pronounce it: “Vo Du Da Way”



Emily Zhen
emzhen@



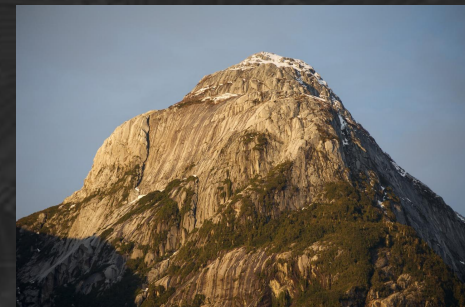
Guy McKhann
gmckhann@



Christian DiGiacomo
cdigiac@



Jesse Liu
liujesse@



Details

Activities:	Difficulty / Rigor:	Risks:
<ul style="list-style-type: none"> ▪ Backpacking/trekking ▪ Climbing/ scrambling/height exposure ▪ Tent camping ▪ Rafting/kayaking** 	<ul style="list-style-type: none"> ▪ Conditioning: High ▪ During Venture: High (Long trekking days with packs) 	<ul style="list-style-type: none"> ▪ Multi-day exposure ▪ Unexpected weather ▪ Exhaustion ▪ Isolated travel ▪ Hypothermia

*Prices do not include any personal equipment, spending money, clothing, airfare, or non-expedition land travel or meals

**May change due to weather and other factors

A photograph of a sailboat on the ocean at sunset. The sky is filled with orange and yellow clouds, and the water is dark blue. The sailboat has a red sail and a blue hull. The text is overlaid on the bottom half of the image.

**SMALL CREW SAILING
TACTICS, NAVIGATION, CREW MANAGEMENT**

SPRING: March 8 – 15, 2025

SMALL CREW SAILING



Venture Fellow & Basic Information

Landed Cost:* \$4,300

Group Size: 18

March 8 - 15, 2025

8-day intense experience in British Virgin Islands on a 45-ft. modern sailboat learning about sailing, navigation, steering, tactics, and racing in a dynamic, small team environment



Haoshu Xu
xuhaoshu@



Szu Kothari
szk@



Abigail Roberts
abigrob@



Details

Activities:	Difficulty / Rigor:	Risks:
<ul style="list-style-type: none"> Tactical sailing and racing tactics Navigation courses Close-quarter community living Active teamwork and communication 	<ul style="list-style-type: none"> Pre-trip conditioning: Low to moderate Expect moderate physical challenges Prepare to function as a team and develop as a leader 	<ul style="list-style-type: none"> Sea sickness Heat stroke Exhaustion Sunburn Discomfort

*Prices do not include any personal equipment, spending money, clothing, airfare, or non-expedition land travel or meals

Quantico USMC Intensive

Spring: TBD



QUANTICO, USMC



Venture Fellow & Basic Information

Landed Cost:* \$700*

Group Size: 90

Spring 2025

This venture builds upon U.S. Marine Corps programs for developing leadership at its Officer Candidate School (OCS) in Quantico, Virginia.



Justin Villanueva
jvillanu@

Details

Activities:	Difficulty / Rigor:	Risks:
<ul style="list-style-type: none"> Adaptability Training Leadership Reaction Course Tarzan Confidence Course Combat Obstacle Course 	<ul style="list-style-type: none"> Moderate difficulty and rigor, but little pre-Venture physical training required. 	<ul style="list-style-type: none"> Bumps, bruises, sprains, fractures. Insect bites. Cold and heat related injuries.

*Prices do not include any personal equipment, spending money, clothing, airfare, or non-expedition land travel or meals



So what next?





IMPORTANT DATES

VF Coffee Chats

- THIS WEEK: Tues 9/10-Thurs 9/12 & Mon 9/16 from 11am-2pm in the MBA café -- [SIGN UP HERE](#)
- MBA Café Drop-In: We will be running a drop-in booth from 12-1:30pm on the same days for any quick questions – look for the Wharton Leadership Venture banner!

TerraDotta

- **Opens**: ALREADY OPEN!!
- **Fall INTENSIVES & Winter EXPEDITIONS Closes**: Monday, September 16th at 11:59 PM ET
- **Seat offers and waitlist position notifications**: Tuesday, September 24th
- **Spring EXPEDITIONS**: Opens 10/23, Closes 11/4, Decisions 11/12
- **Spring Intensives**: January, 2025, App Cycle tbd
- *Payment always due within 48 hours of Seat Commitment*

Waitlist and Rolling Admissions

- **Opens: September 24th**
 - *If you are taken off a waitlist you have:*
 - *24-hours to accept the seat*
 - *48-hours to pay your fee to reserve your spot*
 - You can add yourself to a waitlist during rolling admissions



IMPORTANT INFORMATION ON SCHOLARSHIPS

1 scholarship seat per Expedition

- **The Application for an Expedition Scholarship**
 - You must apply for a venture just as everyone else.
 - Indicate your desire to be considered for a scholarship within the Terra Dotta enrollment site during application.
 - All scholarship applicants will be submitted to the Wharton Financial aid for determination of eligibility.
 - One eligible scholarship applicant for each venture will be randomly selected to receive a scholarship.
 - All applicants will be notified of their scholarship status.
 - Scholarship applicants who did not qualify or win a scholarship **may remain on the venture or waitlist** in a full paying participant capacity.

You can also utilize Student Experience Funds to help with venture costs.

TERRADOTTA REGISTRATION

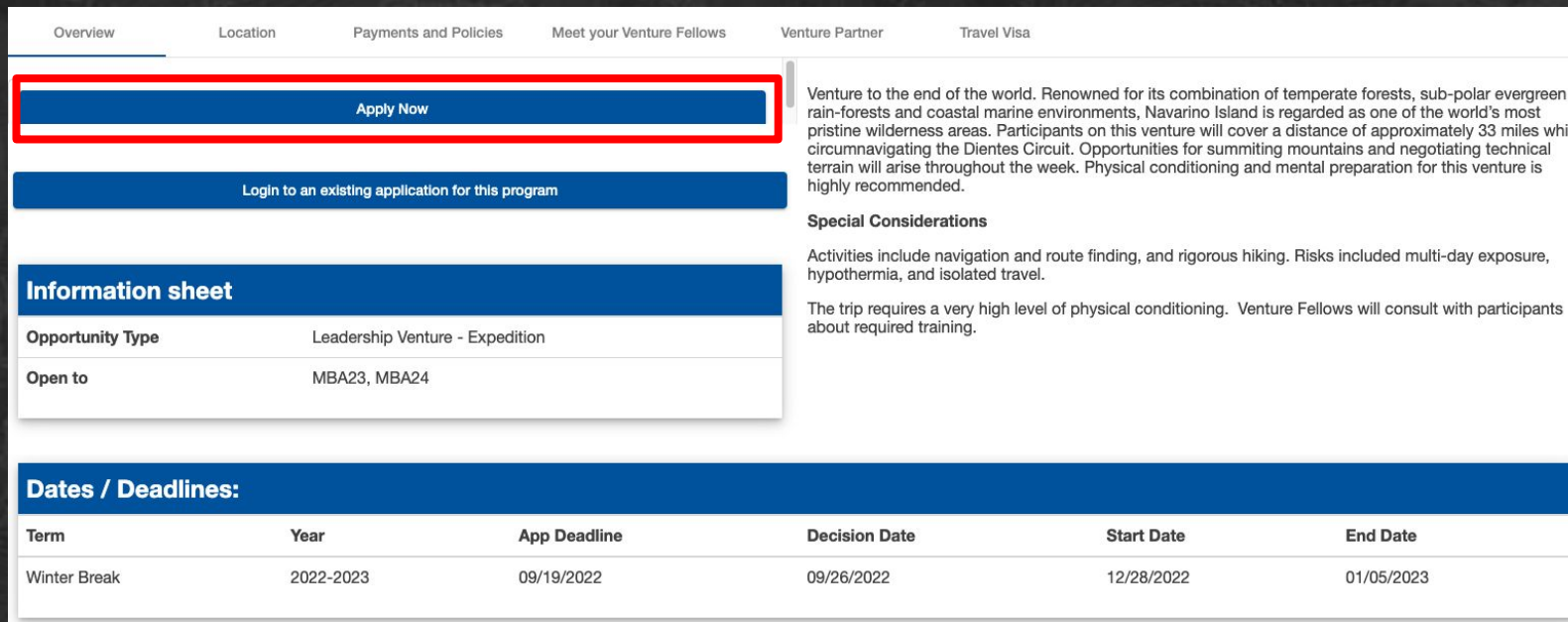


Registration priority:

- Rank
- 2Y students who have not been on a venture
- 1Y students
- 2Y students with previous venture
- Randomization among those with common parameters

TERRADOTTA REGISTRATION

- Apply for programs on [TerraDotta](#)
- Utilize the [Program Search](#) function to locate the expedition or intensive of interest
- Program pages house additional information, as well as the link to apply



Overview Location Payments and Policies Meet your Venture Fellows Venture Partner Travel Visa

Apply Now

Login to an existing application for this program

Information sheet

Opportunity Type	Leadership Venture - Expedition
Open to	MBA23, MBA24

Venture to the end of the world. Renowned for its combination of temperate forests, sub-polar evergreen rain-forests and coastal marine environments, Navarino Island is regarded as one of the world's most pristine wilderness areas. Participants on this venture will cover a distance of approximately 33 miles while circumnavigating the Dientes Circuit. Opportunities for summiting mountains and negotiating technical terrain will arise throughout the week. Physical conditioning and mental preparation for this venture is highly recommended.

Special Considerations

Activities include navigation and route finding, and rigorous hiking. Risks included multi-day exposure, hypothermia, and isolated travel.

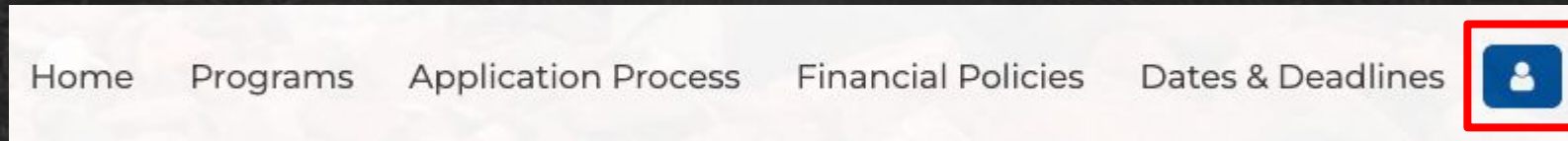
The trip requires a very high level of physical conditioning. Venture Fellows will consult with participants about required training.

Dates / Deadlines:

Term	Year	App Deadline	Decision Date	Start Date	End Date
Winter Break	2022-2023	09/19/2022	09/26/2022	12/28/2022	01/05/2023

TERRADOTTA REGISTRATION

- Login to the system return to an application you've already started (do not click 'apply now' again)



- Submit your application once all app requirements are met
- If you are applying to more than one program, you **must rank** the programs prior to the application deadline
- [Full application instructions](#)



PAYMENT & CANCELLATION

■ Payment:

- Visa, MasterCard, or American Express via online payment portal. Missed payment deadlines can result in Venture removal.
- Communicate payment issues with VFs or WLV Staff as soon as possible.

■ WLV Sponsored Travel Insurance: TBD



ADDITIONAL INFORMATION

■ No Academic Conflicts

- Ventures do not conflict with the academic calendar and are not an acceptable excuse for missing classes or coursework

■ Focused Recruiting Period

- FALL Ventures **DO** conflict with focused recruiting period (Oct 12-19, 2024)
- WINTER Ventures **DO NOT** conflict with focused recruiting period (Jan 13-18, 2025)

■ Travel Dates

- Dates as shown do not include travel days to/from Venture – confirm travel expectations with VFs

■ Costs

- Prices do not include cost of personal equipment, clothing, airfare, land travel, non-venture meals, or spending money

■ Cancelling Ventures

- We reserve the right to cancel any Venture at any time for any reason or remove participants from any Expedition at any time for any reason

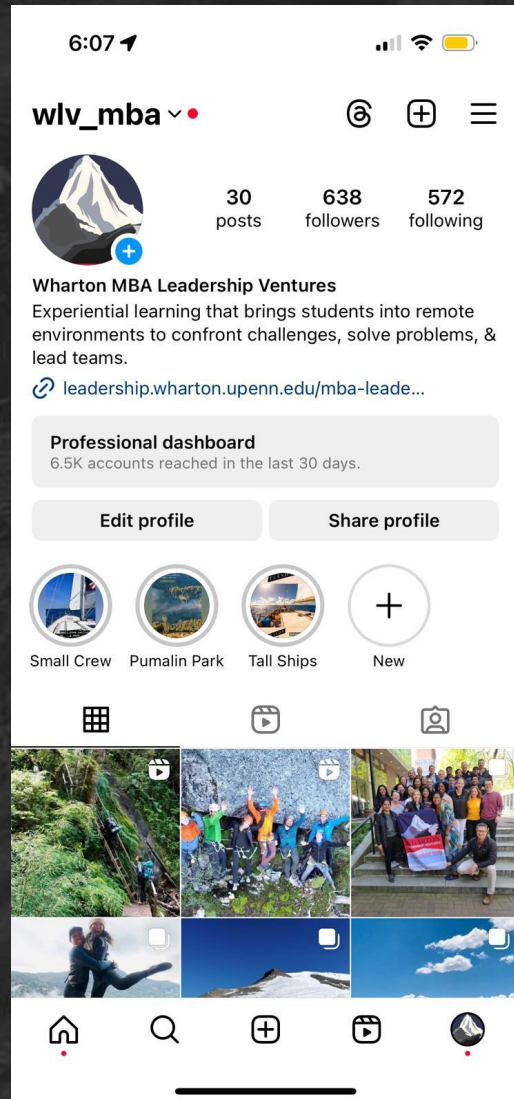
Questions? Ask your Venture Fellows!



ANDES  ZAC LIM  KELSEY MURRAY  MICHAEL KARAMARDIAN  LIZ OSTERTAG				AOTEAROA  JAVO BIERWIRTH  WILL SEDGWICK  NICK MARFONGELLI			
ANTARCTICA  JOE WELCH  CAMERON BUTLER  GABI SIEGAL  KATIE MCCARREN  MISHA PUTNAM					AVELLANO VALLEY  ANDRES STRULOVIC  CHIP CHAMBERS  JAKE PENCE		
CORSICA  NAMOONGA KWENDAKWEMA  CHRIS CORBETT		ATACAMA  WENDY HUANG  DANIEL RIBAND  SYDNEY BABIAK		QUANTICO  JUSTIN VILLANUEVA	FDNY  AARON LEDSKY		
VODUDAHUE  EMILY ZHEN  GUY MCKHANN  CHRISTIAN DIGIACOMO  JESSE LIU				CHAMONIX  SAMHITA KARNATI  NANCY JIANG  HASIT DEWAN  WILL VAN FOSSEN			
SMALL CREW  SZU KOTHARI  ABIGAIL ROBERTS  HAOSHU XU				TALL SHIPS  FRANK GAO  COREY WALLACE  MANALI MAHAJAN			



Follow us on Instagram for a chance to win!



Follow us by Friday 9/20 for a chance to win a Wharton Leadership Venture Nalgene Water Bottle!

Only 1 step to enter! Couldn't be easier!

- Follow [@wlv_mba](#) on Instagram
 - o Note: @wlvexpeditions is the undergraduate account which will NOT be considered for the lottery entry



The Famous "Small Print": You must be Wharton MBA Class of 2025 or 2026 to win. We will contact winners via Instagram DM by the end of the month.

Q&A Breakout

▪ Fall Break Ventures

- Ventures include: Corsica, Chamonix, Atacama Desert, FDNY
- **Location: Meet at front of room**

▪ Winter Break Ventures

- Ventures include: Antarctica, Andes Mountaineering, Tall Ships Sailing, Aotearoa Southern Traverse (New Zealand Backpacking)
- **Location: Meet on right side of room →**

▪ Spring Break Ventures

- Ventures include: Cerro Castillo (Patagonia), Vodudahue (Patagonia Cloud Forest), Small Crew Sailing (British Virgin Islands), Quantico
- **Location: Meet on left side of the room ←**

VF coffee chats this week



Scan the QR code or follow [THIS LINK](#) to sign up for a coffee chat with VFs

We will also have a drop-in table in the MBA cafe from 12-1:30pm every day!

THANK YOU!

