

Wharton Leadership Ventures Program

Information Session

September 10, 2025



TODAY'S AGENDA



- Share the **mission** and **characteristics** of a Wharton Leadership Venture
- Meet the WG26 **Venture Fellows** and **our partners**
- Preview the 2025-26 **Venture offerings**
- Review **key dates and logistics** (e.g., how to apply)
- Breakout for **Q&A**

All information in this session is subject to change

What are Wharton Leadership Ventures?



OUR MISSION



To create, offer, and facilitate world-class
expeditions and intensives
that provide MBA students with highly demanding
environments for **mutual growth, experiential
learning, and leadership development**

LEADERSHIP VENTURES INVOLVE



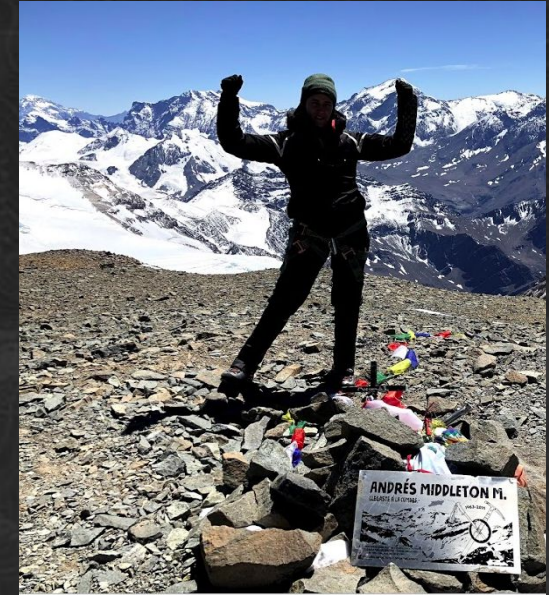
LEADERSHIP AND MEMBERSHIP

Observe leadership or the absence of leadership first-hand



SELF AND PEER DISCOVERY

Step out of comfort zone



CHARACTER DEVELOPMENT

Exceed personal limitations

DEFINING CHARACTERISTICS OF AN EXPEDITION

Experiential Learning:

learn through leading, following, and doing

Feedback:

reflect on your personal and team experience

Decision Making:

make decisions, strategize, and set goals as a leader and member

Uncertainty:

risk failure, conflict, and ambiguity

Immersive:

Participatory involvement for the entire venture (Crew, not passengers)

NOT a casual leisure trip!

LEADERSHIP VENTURES FORMAT



Intensives



- 1-2 days
- Within driving distance

Expeditions

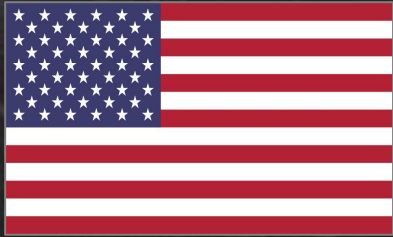


- 7-9 days
- Across the globe

EXPEDITIONS SPAN THE GLOBE

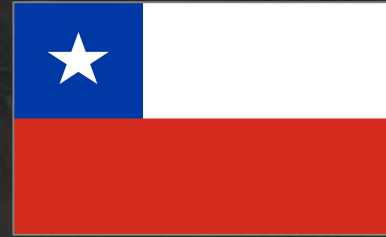


USA



- Intensives (FDNY, Quantico)
- Tall Ship Sailing

Chile



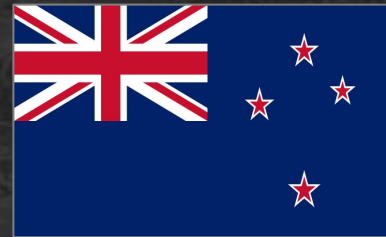
- Atacama Desert
- Andes Winter Mountaineering
- Avellano Valley - Patagonia
- Vodudahue Cloud Forest - Patagonia

British Virgin Islands



- Small Crew Sailing

New Zealand



- Aotearoa Southern Traverse

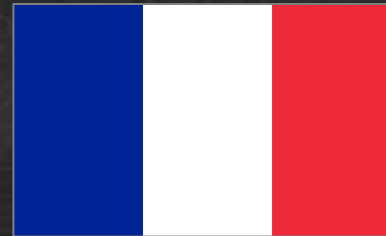
Ecuador



- Highlands Traverse

★ New for 2025-26

France



- Southern French Alps
- Corsica

★ New for 2025-26

Risks and Preparedness



EXPEDITION RISKS & ACTIVITIES



Wharton Leadership Venture Expeditions involve **considerable risk**. Outdoor activities present **hazards**. Many ventures are isolated expeditions with significant variables that can initiate **complex emergency situations without clear or simple solutions**. Medical assistance and/or evacuation may be days away. **We do not – and cannot – guarantee your safety.**

However, we **are committed to your physical and emotional well-being**. We commit to providing you with timely, accurate information about the activities included in each of our ventures and to meet the highest industry standards for outfitter selection and risk management. You are ultimately responsible for your decisions. We believe that our students are intelligent adults who can make appropriate decisions for themselves.

PHYSICAL FITNESS

You **DO NOT** need to be in top physical shape to **participate**.

It's more about **attitude**, **mentality**, and **preparation** for the specific venture!

...but, **training** will make the experience **a lot more fun!**

PHYSICAL PREPARATION



Anyone can succeed on a venture, BUT they are **hard**. Being physically prepared ahead of your venture will make the adventure more enjoyable and allow you to focus more fully on leadership development.

Venture-specific



Your VFs and WLV staff can suggest workouts to ensure you are prepped for the physical demands of your specific venture (e.g. biking, carrying a heavy pack, breaking in hiking boots)

Consistency



We suggest that you develop a routine prior to your venture. Allow for regular workouts and adequate recovery time.

Individual



It is your individual responsibility to prepare physically for the venture you are attending. Consider this your first contribution to the team you will be part of for a week in the wild.

Venture Fellows & Partners



2025-2026 VENTURE FELLOWS & PARTNERS



August VF Training, '25

WHO ARE THE VENTURE FELLOWS?

- **Classmates:**

- 36 second-year students who love the outdoors, adventures, and using teamwork to make the dream work

- **Trained Venture Educators:**

- Lead the educational content of the Venture; trained in conflict mediation, goal setting, coaching, and group decision making

BEFORE

- Meet with each participant
- Support logistics (gear, travel,...)

DURING

- Facilitate and deliver educational content

AFTER

- Reflect with the group

HOW TO BECOME A VENTURE FELLOW (VF)

VF Ethos: What are we looking for?

SERVICE

View it as your responsibility to look beyond yourself and do more than just your job. Your duty includes taking care of those around you and finding ways to support and improve whoever is on your team. Find strength in subordinating your individual needs and concerns to those of a greater community.

IMPACT

Be a good steward of the ecosystem you are in. Ensure you are having an inclusive and positive influence on your social environment. Be the first to care deeply and offer compassion to inspire the legacy of positive impact that keeps the magic of Ventures alive.

LEARNING

Lead by example in demonstrating the WLV principles and the VF Ethos. Be vigilant about identifying opportunities to step up and become savvy about what leadership skills to deploy.

VF Application Process

- Application for Venture Fellow will open **February 2026**
 - Application is due AFTER the spring ventures.
 - Process will include essay & interview (TBD)
- VFs will host a separate **info session**, and **coffee chats** next semester for opportunities to learn more about the process. Stay tuned!

Prior experience with Ventures and the outdoors NOT required!

MCNULTY LEADERSHIP PROGRAM STAFF



Jules Roy
Director
julesroy@



Kellie Vetter
Program Coordinator
kvetter@

EXPERIENCED EXPEDITION PARTNERS



Nivation

- New Zealand Mt. to Sea



Sea Education Association

- Small Crew Sailing
- Tall Ships Sailing



Vertical

- Andes Mountaineering
- Atacama Desert
- Ecuador
- Cerro Castillo - Patagonia
- Vodudahue - Patagonia



Mountain Path

- Corsica, France
- Southern French Alps, France



United States Marine Corps

- Quantico Military Simulation



NYC Fire Department

- FDNY Simulation

The 2025/26 Leadership Ventures



SUMMARY OF WLTV EXPEDITIONS



	Venture	Date	Terrain	Physical Intensity	Camping/ Outdoor Living	High Altitude	Weather Exposure	Heavy Load Carrying	Endurance
FALL	Atacama Desert	Fall 25	Desert	●	✓	✓	✓		✓
	Southern French Alps	Fall 25	Mountain	●	✓	✓	✓		✓
	Corsica (France)	Fall 25	Mountain	●	✓		✓		✓
WINTER	Andes Mountaineering	Winter 25	Mountain	●	✓	✓	✓		✓
	Avellano Valley- Patagonia	Winter 25	Mountain	●	✓		✓	✓	✓
	NZ Mt. to Sea (Aotearoa)	Winter 25	Mountain	●	✓		✓	✓	✓
	Tall Ships Sailing	Winter 25	Ocean	●	✓		✓		
SPRING	Ecuador	Spring 26	Mountain	●	✓		✓	✓	✓
	Vodudahue - Patagonia	Spring 26	Mountain	●	✓		✓	✓	✓
	Small Crew Sailing	Spring 26	Ocean	●	✓		✓		
1 DAY	FDNY	Fall & Spring	Urban	●					
	Quantico	Spring	Forest	●			✓		✓



Very Difficult – High Level of Training Required



Difficult – Moderate Level of Training Required

A high-altitude mountain landscape under a clear blue sky. The foreground features a calm lake that perfectly reflects the surrounding snow-dusted mountain peaks and ridges. The mountains are rugged, with patches of white snow or ice contrasting against the dark, rocky terrain. The overall scene is serene and majestic, capturing the beauty of a high-altitude environment.

ATACAMA DESERT HIGH ALTITUDE MULTISPORT

FALL: October 11 – 18, 2025

ATACAMA DESERT

Venture Fellow & Basic Information

Landed Cost:*

\$4,000

Group Size:

18

October 11-18, 2025

Spend a week in one of the most unique and beautiful landscapes on earth, and challenge yourself and support your teammates through multiple activities, all done at altitude



Kevin Lee
kminlee@



Dan Mayers
dmayers@



Julia Telzak
jtelzak@

Details

Activities:	Difficulty / Rigor:	Risks:
<ul style="list-style-type: none"> Trekking Mountain Biking Rock Climbing Mountaineering Navigation 	<ul style="list-style-type: none"> Pre-trip conditioning: High (good physical condition recommended) During Venture: High Participants must pass bike test before landing 	<ul style="list-style-type: none"> High altitude Falling rocks Extreme cold (frostbite and hypothermia) Sunburn/heatstroke Multi-day exposure

*Prices do not include any personal equipment, spending money, clothing, airfare, or non-expedition land travel or meals



Southern French Alps - France

FALL: October 11 – 18, 2025



Southern French Alps



Venture Fellow & Basic Information

Landed Cost:*

\$4,400

Group Size:

18

Oct 11 - 18, 2025

Teams trekking in remote valleys of the Mercantour National Park in one of the most extensive and breathtaking mountain ranges in Europe.



Jackson Ellis
jcellis1@



Cleo Fan
cleof@



Sarah Quettalawa
sarahhq@



Details

Activities:	Difficulty / Rigor:	Risks:
<ul style="list-style-type: none"> ▪ Backpacking/trekking ▪ Rock scrambling ▪ Tent camping 	<ul style="list-style-type: none"> ▪ Pre-Trip Conditioning: High (good physical condition recommended) ▪ During Venture: High 	<ul style="list-style-type: none"> ▪ Cold / Hypothermia ▪ Sunburn / Heatstroke ▪ Snow / Ice

*Prices do not include any personal equipment, spending money, clothing, airfare, or non-expedition land travel or meals

Corsica - France

FALL: October 11 - 18, 2025



CORSICA - France



Venture Fellow & Basic Information

Landed
Cost:*

\$4,600

Group
Size:

18

Oct 11 - 18, 2025

A week of trekking the spine of mountains that divide the west and east coast of the island of Corsica.



Andrew Blocker
blockera@



Rayleen Hu
rayhu@



Jake Kirschner
jdkirsh@

Details

Activities:	Difficulty / Rigor:	Risks:
<ul style="list-style-type: none">▪ Backpacking▪ Trekking▪ Tent camping▪ Sea kayaking	<ul style="list-style-type: none">▪ Highest physical conditioning recommended▪ During Venture: High (10+ hours of hiking with full backpacks on some days)	<ul style="list-style-type: none">▪ Multi-day exposure▪ Unexpected weather▪ Exhaustion

*Prices do not include any personal equipment, spending money, clothing, airfare, or non-expedition land travel or meals



Andes Mountaineering

WINTER: Dec 28, 2025 – Jan 4, 2026



ANDES MOUNTAINEERING



Venture Fellow & Basic Information

Landed Cost:*

\$4,000

Group Size:

24

Dec. 28, 2025 - Jan. 4, 2026

Alpine climb of a major peak in the Central Chilean Andes. This venture will provide both physical and mental challenge exercising leadership, teamwork, and self-discipline.



Erin Brousseau
enbrouss@



Matthew Yong
mattyong@



Fei Zou
feizou@



Details

Activities:	Difficulty / Rigor:	Risks:
<ul style="list-style-type: none">High-altitude MountaineeringGlacier/Snow TravelBackpacking	<ul style="list-style-type: none">Pre-Trip Conditioning: High physical condition is necessaryDuring Venture: High (long periods of strenuous activity)	<ul style="list-style-type: none">Altitude sickness, cold, sunburn, multi-day exposure, isolated travel, falling rock/rolling rock, and hypothermia

*Prices do not include any personal equipment, spending money, clothing, airfare, or non-expedition land travel or meals

FDNY Intensive

Fall: November 1, 2025

FDNY



FIRE DEPARTMENT OF NEW YORK CITY



Venture Fellow & Basic Information

Landed
Cost:*

\$700

Group
Size:

40

Nov 1, 2025

Venture uses real FDNY training facilities on Randall's Island, NY. Venture focuses on crisis leadership and communication through fire and emergency response simulation.



Billy Teitelbaum
teitw@



Details

Activities:	Difficulty / Rigor:	Risks:
<ul style="list-style-type: none">Extinguishing burning carResponding to the scene of a bombingSearching for casualties in a smoke-filled room	<ul style="list-style-type: none">Moderate difficulty and rigor. No pre-venture training required.	<ul style="list-style-type: none">Normal physical risks, including bumps, bruises, sprains, falls.

*Prices do not include any personal equipment, spending money, clothing, airfare, or non-expedition land travel or meals



New Zealand

Aotearoa Southern Traverse | NZ's Southern Alps

WINTER: December 29, 2025 – January 6, 2026
January 1 – 6, 2026

NEW ZEALAND



Venture Fellow & Basic Information

Landed Cost:*

\$4,600

Group Size:

36 (Two Groups)

1) Dec 29, 2025 – Jan 6, 2026
2) Jan 1 – 9, 2026

Teams trekking the Southern Alps and rafting river gorges in the South Island of New Zealand.



Chloe Gulati
cgulati@



Matthew Keepman
mkeepman@



Laura Kunstler-Brooks
lkbrooks@



Evan Zhang
evzhang@



Lizzie Raab
raabel@



Bernard Witschen
bkwits@



Details

Activities:	Difficulty / Rigor:	Risks:
<ul style="list-style-type: none"> Trekking Ka Tiritiri o te Moana, the Southern Alps Rafting (moderate grade rapids, self guided) 	<ul style="list-style-type: none"> High (good physical condition recommended) 	<ul style="list-style-type: none"> Cold / Hypothermia Sunburn / Heatstroke Fast / Deep Water Snow / Ice

*Prices do not include any personal equipment, spending money, clothing, airfare, or non-expedition land travel or meals

TALL SHIPS SAILING

NAVIGATION & OCEANOGRAPHIC
EXPLORATION

Winter: December 29, 2025 –
January 5, 2026



TALL SHIP SAILING



Venture Fellow & Basic Information

Landed Cost:*

\$4,500

Group Size:

18

Dec. 29, 2025 - Jan. 5, 2025

Teams of participants navigating and managing a 134 foot-long Brigantine ship for 8 days in open sea, in the waters surrounding the Caribbean island of St. Croix



Bradley Smith
bradsm@



Lyncy Nyandoche
nyalyncy@



Sofia Vega
vegasof@



Details

Activities:	Difficulty / Rigor:	Risks:
<ul style="list-style-type: none"> Continuous navigation Critical oceanographic research Sailing Ship management, including ship watch 	<ul style="list-style-type: none"> Pre-trip conditioning: Low to moderate Expect moderate physical challenges Irregular sleep Decision-making under unfamiliar circumstances 	<ul style="list-style-type: none"> Sea Sickness Sunburn/Heatstroke Deep Waters Dehydration

*Prices do not include any personal equipment, spending money, clothing, airfare, or non-expedition land travel or meals

Avellano Valley - Patagonia

Winter: December 27, 2025 – January 3, 2026



AVELLANO VALLEY - PATAGONIA



Venture Fellow & Basic Information

Landed Cost:*

\$4,000

Group Size:

18

Dec. 27, 2025 – Jan. 3, 2026

Week of trekking in Chile's Patagonia region on one of the world's most stunning mountain regions – the Avellano Valley



Michael Steedman
msteed20@



Vedika Chadha
vedikac@



Christian Hobbs
chobbs@



Details

Activities:	Difficulty / Rigor:	Risks:
<ul style="list-style-type: none">BackpackingTrekkingTent camping	<ul style="list-style-type: none">Conditioning: ModerateDuring Venture: High/Moderate (Long trekking days with packs)	<ul style="list-style-type: none">Multi-day exposureUnexpected weatherExhaustionIsolated travelHypothermia

*Prices do not include any personal equipment, spending money, clothing, airfare, or non-expedition land travel or meals

Highlands Traverse - Ecuador

SPRING: March 7 – 14, 2026



Highlands Traverse - Ecuador



Venture Fellow & Basic Information

Landed Cost:*

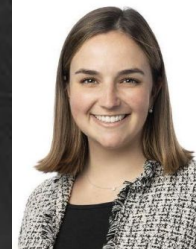
\$4,000

Group Size:

18

March 7 - 14, 2026

Week of trekking navigating the traverse between two iconic volcanoes, Cotopaxi to Antisana



Alexia Fieger
afieger@



Liz Tang
liztang@



Varun Varshney
vvar@



Details

Activities:	Difficulty / Rigor:	Risks:
<ul style="list-style-type: none">▪ Backpacking▪ Trekking▪ Tent camping	<ul style="list-style-type: none">▪ Conditioning: Moderate▪ During Venture: High/Moderate (Long trekking days with packs)	<ul style="list-style-type: none">▪ Multi-day exposure▪ Unexpected weather▪ Exhaustion▪ Isolated travel▪ Hypothermia

*Prices do not include any personal equipment, spending money, clothing, airfare, or non-expedition land travel or meals



Vodudahue - Patagonia (“Cloud Forest”)

SPRING: March 7 – 14, 2026

VODUDAHUE - PATAGONIA ("CLOUD FOREST")

Venture Fellows & Basic Information

Landed Cost:*

\$4,100

Group Size:

24

March 7 - 14, 2026

Week of trekking in Chile's northern Patagonia region (Pumalin National Park) with rainforest, fjords, mountains, & SA's longest Via Ferrata

How to pronounce it: "Vo Du Da Way"



Kira Guo
wenboguo@



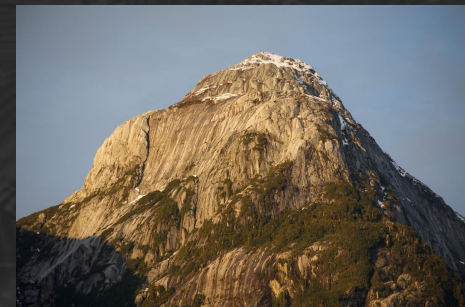
Mitchell Koganski
koganski@



Abhi Dhillon
asdhil@



Rohan Parepally
rvp@



Details

Activities:	Difficulty / Rigor:	Risks:
<ul style="list-style-type: none"> Backpacking/trekking Climbing/scrambling/height exposure Tent camping Rafting/kayaking** 	<ul style="list-style-type: none"> Conditioning: High During Venture: High (Long trekking days with packs) 	<ul style="list-style-type: none"> Multi-day exposure Unexpected weather Exhaustion Isolated travel Hypothermia

*Prices do not include any personal equipment, spending money, clothing, airfare, or non-expedition land travel or meals

**May change due to weather and other factors

A photograph of a sailboat with a red sail sailing on the ocean at sunset. The sky is filled with orange and yellow clouds, and the water is dark blue. The boat's mast and rigging are visible in the foreground.

SMALL CREW SAILING TACTICS, NAVIGATION, CREW MANAGEMENT

SPRING: March 7 – 14, 2026

SMALL CREW SAILING



Venture Fellow & Basic Information

Landed
Cost:*

\$4,400

Group
Size:

18

March 7 - 14, 2026

8-day intense experience in British Virgin Islands on a 45-ft. modern sailboat learning about sailing, navigation, steering, tactics, and racing in a dynamic, small team environment



Kevin Zheng
kyzheng@



Camilla Wang
wcamilla@



Abigael Bamgboye
abigaelb@



Details

Activities:	Difficulty / Rigor:	Risks:
<ul style="list-style-type: none"> Tactical sailing and racing tactics Navigation courses Close-quarter community living Active teamwork and communication 	<ul style="list-style-type: none"> Pre-trip conditioning: Low to moderate Expect moderate physical challenges Prepare to function as a team and develop as a leader 	<ul style="list-style-type: none"> Sea sickness Heat stroke Exhaustion Sunburn Discomfort

*Prices do not include any personal equipment, spending money, clothing, airfare, or non-expedition land travel or meals

Quantico USMC Intensive

Spring: TBD



QUANTICO, USMC



Venture Fellow & Basic Information

Landed Cost:* \$700*

Group Size: 90

Spring 2025

This venture builds upon U.S. Marine Corps programs for developing leadership at its Officer Candidate School (OCS) in Quantico, Virginia.



Jacob Chapa
jchapa@

Details

Activities:	Difficulty / Rigor:	Risks:
<ul style="list-style-type: none"> Adaptability Training Leadership Reaction Course Tarzan Confidence Course Combat Obstacle Course 	<ul style="list-style-type: none"> Moderate difficulty and rigor, but little pre-Venture physical training required. 	<ul style="list-style-type: none"> Bumps, bruises, sprains, fractures. Insect bites. Cold and heat related injuries.

*Prices do not include any personal equipment, spending money, clothing, airfare, or non-expedition land travel or meals



So what next?



Ventures Open for Application

Fall Break Ventures

- **Limited Spots still Available: Corsica, Southern French Alps, Atacama Desert**
- Participation on a 2025 Fall Break Venture will not influence future venture seat offer probability!

Winter Break Ventures / Fall Intensive

- **List of Ventures**
 - **Winter Break Expeditions:** Andes Mountaineering, Avellano Valley, Tall Ships Sailing, Aotearoa Southern Traverse (New Zealand Backpacking)
 - **Fall Intensive:** FDNY
- **Major Timeline**
 - **Monday, September 15, 2025 11:59pm – Application Deadline**
 - Week of September 22, 2025 – Decision Released & Rolling Admission Opens
 - *If you are taken off a waitlist you have:*
 - 48-hours to accept the seat
 - 48-hours to pay your fee to reserve your spot
 - You can add yourself to a waitlist during rolling admissions

Spring Venture Applications coming soon!

- Spring Break Expeditions: October 23, 2025 - Ecuador, Cloud Forest - Patagonia, Small Crew Sailing
- Spring Intensive: January 29, 2026 - Quantico

IMPORTANT INFORMATION ON SCHOLARSHIPS

1 scholarship seat per Expedition

▪ **The Application for an Expedition Scholarship**

- You must apply for a venture just as everyone else.
- Indicate your desire to be considered for a scholarship within the Terra Dotta enrollment site during application.
- All scholarship applicants will be submitted to the Wharton Financial aid for determination of eligibility.
- One eligible scholarship applicant for each venture will be selected to receive a scholarship.
- All applicants will be notified of their scholarship status.
- Scholarship applicants who did not qualify or win a scholarship **may remain on the venture or waitlist** in a full paying participant capacity.

▪ **Student Experience Fund**

- *You can also utilize Student Experience Funds to help with venture costs!*
- *WSEF is a reimbursement process in coordination with the Financial Aid Office*

TERRADOTTA REGISTRATION



Registration priority:

- Rank
- 2Y students who have not been on a venture
- 1Y students who have not been on a venture
- 2Y students with previous venture and so forth
- Randomization among those with common parameters

TERRADOTTA REGISTRATION

- Apply for programs on [TerraDotta](#)
- Utilize the [Program Search](#) function to locate the expedition or intensive of interest
- Program pages house additional information, as well as the link to apply

Overview
Location
Payments and Policies
Meet your Venture Fellows
Venture Partner
Travel Visa

Apply Now

Login to an existing application for this program

Information sheet

Opportunity Type	Leadership Venture - Expedition
Open to	MBA23, MBA24

Dates / Deadlines:

Term	Year	App Deadline	Decision Date	Start Date	End Date
Winter Break	2022-2023	09/19/2022	09/26/2022	12/28/2022	01/05/2023

Venture to the end of the world. Renowned for its combination of temperate forests, sub-polar evergreen rain-forests and coastal marine environments, Navarino Island is regarded as one of the world's most pristine wilderness areas. Participants on this venture will cover a distance of approximately 33 miles while circumnavigating the Dientes Circuit. Opportunities for summiting mountains and negotiating technical terrain will arise throughout the week. Physical conditioning and mental preparation for this venture is highly recommended.

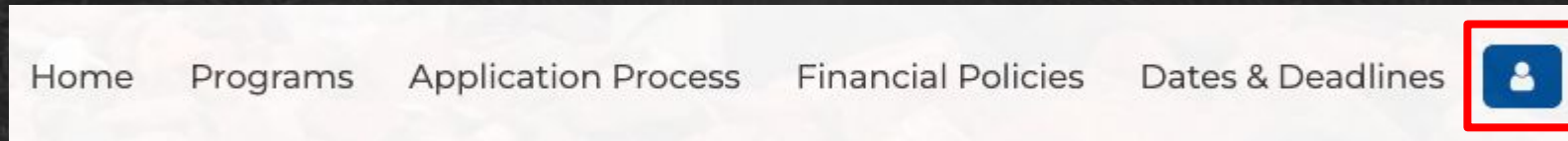
Special Considerations

Activities include navigation and route finding, and rigorous hiking. Risks included multi-day exposure, hypothermia, and isolated travel.

The trip requires a very high level of physical conditioning. Venture Fellows will consult with participants about required training.

TERRADOTTA REGISTRATION

- Login to the system return to an application you've already started (do not click 'apply now' again)



- Submit your application once all app requirements are met
- If you are applying to more than one program, you **must rank** the programs prior to the application deadline
- [Full application instructions](#)

PAYMENT & CANCELLATION



■ **Payment:**

- Visa, MasterCard, or American Express via online payment portal. Missed payment deadlines can result in Venture removal.
- Communicate payment issues with VFs or WLV Staff as soon as possible.

■ **Financial Policy**

- All programs have a travel package fee and once you commit to a program, you are financially responsible. In general, travel packages will include hotels, group transportation, and some meals. The cost of travel to the course location and all other associated expenses (visas, taxis, gear, and other incidentals) will be borne by students. Students are strongly encouraged to consider the academic and financial consequences prior to committing to a program.

■ **Cancellation Policy**

- If a student needs to cancel their participation after accepting their seat, Wharton will provide a 75% refund of the Travel Package Fee or Program Fee

ADDITIONAL INFORMATION

■ No Academic Conflicts

- o Ventures do not conflict with the academic calendar and are not an acceptable excuse for missing classes or coursework

■ Focused Recruiting Period

- o FALL Ventures **DO** conflict with focused recruiting period (Oct 11-18, 2025)
- o WINTER Ventures **DO NOT** conflict with focused recruiting period (End of Dec 2025 - Early Jan 2026)

■ Travel Dates

- o Dates as shown do not include travel days to/from Venture – confirm travel expectations with VFs

■ Costs

- o Prices do not include cost of personal equipment, clothing, airfare, land travel, non-venture meals, or spending money

■ Cancelling Ventures

- o We reserve the right to cancel any Venture at any time for any reason or remove participants from any Expedition at any time for any reason

Questions? Ask your Venture Fellows!



McNULTY LEADERSHIP PROGRAM WG26 VENTURE FELLOWS

2025-26

VODUDAHUE CLOUD FOREST



ABHI DHILLON



KIRA GUO



MITCHELL KOGANSKI



ROHAN PAREPALLY

ANDES MOUNTAINEERING



ERIN BROUSSEAU



MATTHEW YONG



FEI ZOU

FDNY



BILLY TEITELMAUM



CHLOE GULATI



MATT KEEPMAN



LAURA KNUSTLER-BROOKS

AOTEAROA NEW ZEALAND



ELIZABETH RAAB



BERNARD WITSCHEN



EVAN ZHANG

QUANTICO



JAKE CHAPA

CORSICA



ANDREW BLOCKER



RAYLEEN HU



JAKE KIRSCHNER

ATACAMA



KEVIN LEE

FRENCH ALPS



JACKSON ELLIS



CLEO FAN



SARAH QUETTAWALA

ECUADOR



ALEXIA FIEGER



LIZ TANG



VARUN VARSHNEY



DAN MAYERS



JULIA TELZAK

AVELLANO VALLEY



VEDIKA CHADHA



CHRISTIAN HOBBS



MIKE STEEDMAN

SMALL CREW SAILING



ABIGAEI BAMGBOYE



CAMILLA WANG



KEVIN ZHENG



TALL SHIP SAILING



LYNCY NYANDOCHÉ

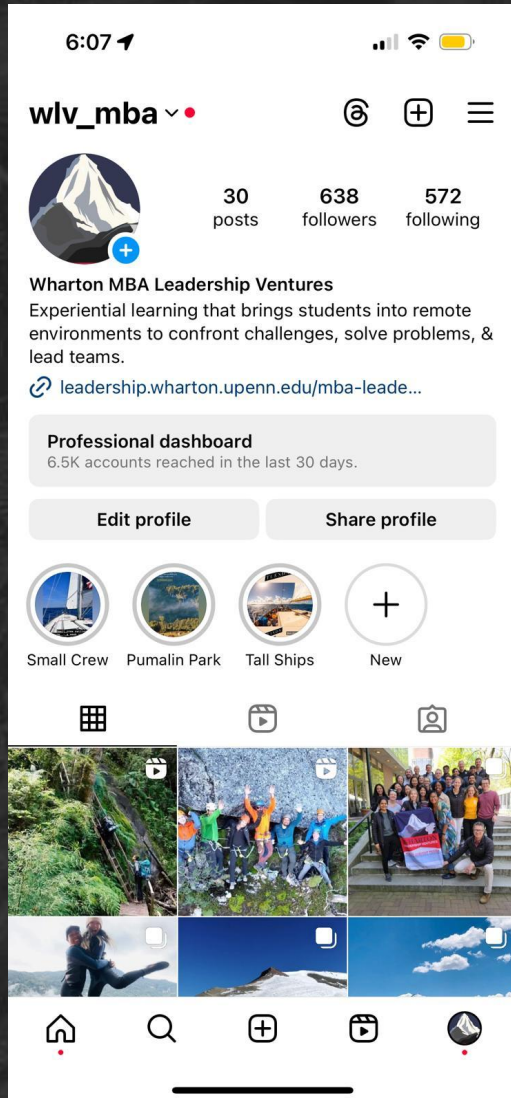


BRADLEY SMITH



SOFIA VEGA

Follow us on Instagram for a chance to win!



Follow us by Friday 9/19 for a chance to win a Wharton Leadership Venture Nalgene Water Bottle!

Only 1 step to enter! Couldn't be easier!

- Follow @wlv_mba on Instagram
 - Note: @wlvexpeditions is the undergraduate account which will NOT be considered for the lottery entry



The Famous "Small Print": You must be Wharton MBA Class of 2025 or 2026 to win. We will contact winners via Instagram DM by the end of the month.

Q&A Breakout

■ Fall Break Ventures

- Ventures include: Corsica, Southern French Alps, Atacama Desert
- **Location: Meet in front of the room**

■ Winter Break Ventures

- Ventures include: Andes Mountaineering, Avellano Valley, Tall Ships Sailing, Aotearoa Southern Traverse (New Zealand Backpacking)
- **Location: Meet on right side of the room →**

■ Spring Break Ventures

- Ventures include: Ecuador, Vodudahue (Patagonia Cloud Forest), Small Crew Sailing (British Virgin Islands)
- **Location: Meet on left side of the room ←**

■ Intensives

- Ventures include: FDNY, Quantico
- **Location: Meet in back side of the room**

THANK YOU!



SUMMARY OF WLW EXPEDITIONS

To Be Updated



	Venture	Date	Terrain	Physical Intensity	Camping/ Outdoor Living	High Altitude	Weather Exposure	Heavy Load Carrying	Endurance
FALL	Atacama Desert	Fall 24	Desert	■	✓	✓	✓		✓
	Chamonix (France)	Fall 24	Mountain	◆	✓	✓	✓		✓
	Corsica (France)	Fall 24	Mountain	◆	✓		✓		✓
WINTER	Andes Mountaineering	Winter 24	Mountain	◆	✓	✓	✓		✓
	Antarctica Trekking	Winter 24	Ice	■	✓		✓	✓	✓
	NZ Mt. to Sea (Aotearoa)	Winter 24	Mountain	◆	✓		✓	✓	✓
	Tall Ships Sailing	Winter 24	Ocean	■	✓		✓		
SPRING	Avellano Valley- Patagonia	Spring 25	Mountain	◆	✓		✓	✓	✓
	Vodudahue - Patagonia	Spring 25	Mountain	◆	✓		✓	✓	✓
	Small Crew Sailing	Spring 25	Ocean	■	✓		✓		
1 DAY	FDNY	Fall & Spring	Urban	■					
	Quantico	Spring	Forest	■			✓		✓

◆ Very Difficult – High Level of Training Required

■ Difficult – Moderate Level of Training Required

IMPORTANT DATES

To Be Updated



VF Coffee Chats

- THIS WEEK: Tues 9/10-Thurs 9/12 & Mon 9/16 from 11am-2pm in the MBA café -- [SIGN UP HERE](#)
- MBA Café Drop-In: We will be running a drop-in booth from 12-1:30pm on the same days for any quick questions – look for the Wharton Leadership Venture banner!

TerraDotta

- **Opens:** ALREADY OPEN!!
- **Fall INTENSIVES & Winter EXPEDITIONS Closes:** Monday, September 16th at 11:59 PM ET
- **Seat offers and waitlist position notifications:** Tuesday, September 24th
- **Spring EXPEDITIONS:** Opens 10/23, Closes 11/4, Decisions 11/12
- **Spring Intensives:** January, 2025, App Cycle tbd
- *Payment always due within 48 hours of Seat Commitment*

Waitlist and Rolling Admissions

- **Opens: September 24th**
 - *If you are taken off a waitlist you have:*
 - *24-hours to accept the seat*
 - *48-hours to pay your fee to reserve your spot*
 - *You can add yourself to a waitlist during rolling admissions*